



NATIONAL AGENCY OF NATURAL RESOURCES

INVESTING IN MINING AND OIL SECTOR
6-7 June 2012
Tirana, Albania

NATIONAL AGENCY OF NATURAL RESOURCES

The National Agency of Natural Resources has as main object of its activity the development, supervision and rational exploitation of natural resources based in governmental politics and the monitor of their post-exploitation in mining, hydrocarbon and energetic sector..

MINING ACTIVITY

Albania is distinguished for its mineral resources. Most of them have been discovered and exploited from ancient times up to date.

There are also other deposits for which a careful study and evaluation of geological reserves should be conducted.

LICENCING SITUATION

Up to November 1st 2011, there were issued 752 mining permits out of which were 673 exploitation permits, mostly in Bulqiza, Kruja, Berat, Tirana and Librazhdi districts.

211 permits for chrome ore;

231 permits for limestone;

32 permits for clay;

34 permits for iron-nickel and nickel-silicate;

43 permits for tabulated limestone;

30 permits for massive and flaglic sandstone.

CONCESSIONS

(1/2)

From 1998 are given in concession:

- Bulqiza Massif, to Austrian “ACR”ltd company, the Chrome Mine of Bulqiza, concentrator of it, heavy-media suspense concentrator of Klosi, ferrochrome Plant-Burrel-Mat, Chrome Mine of Katjel, Librazhd district, Chrome Mine Pojska, Pogradec and Ferrochrome Plant in Elbasan.

CONCESSIONS (2)

- The Polymetallic Massif of Munella, to the Turkish Company “BER-ALB”.
- Bitumen Mine of Selenica, in the 2001, to the French Company Bitumi Selenica sh.a.
- Kalimsh and Vlahna mine, to IMI joint ventura turkish and chinese company, concentrator of Kalimashi and Golaj

Company	Employee	Production		Investments				Revenues	
		ton,(m³)	ton	Mining operations		Machineries and equipments		\$	000 ALL
Beralba shpk (copper)	73	Mineral	Concentrate	\$	000 Lek	\$	000 Lek		
	63	160000	13400	784000		0		32700000	
Beralba shpk	81	126357	11294	921270		388841		20340969	
	625	67328			139		400	1446250	
Selenica Bitumen	68	2000			12280		220		219900
		500							
Mineral Bitumen shpk	17	387			315		0		28000
		4200						300	
Alb Tifbau shpk	2	80000 m³			0		0		0
Antea Cement sh.a	25	296381			0		0		0
Antea Cement sh.a	0	1184818 m³			0		0		0
Antea Cement sh.a	5	25000 m³			0		0		0
F.Kruja Cement Factory	0	1260000 m³			0		0		7500
F.Kruja Cement Factory	2	337800			0		0		
KLP Dolomite	3	2000			600000		0		0
Stone production shpk	38	6416 m³			1217000		9766.8		152191.3
Stone production shpk	2	380 m³			0		98.2		9270.218
TOTAL			24694 ton	1705.27	163112	388841	410085	54487219	527161.518



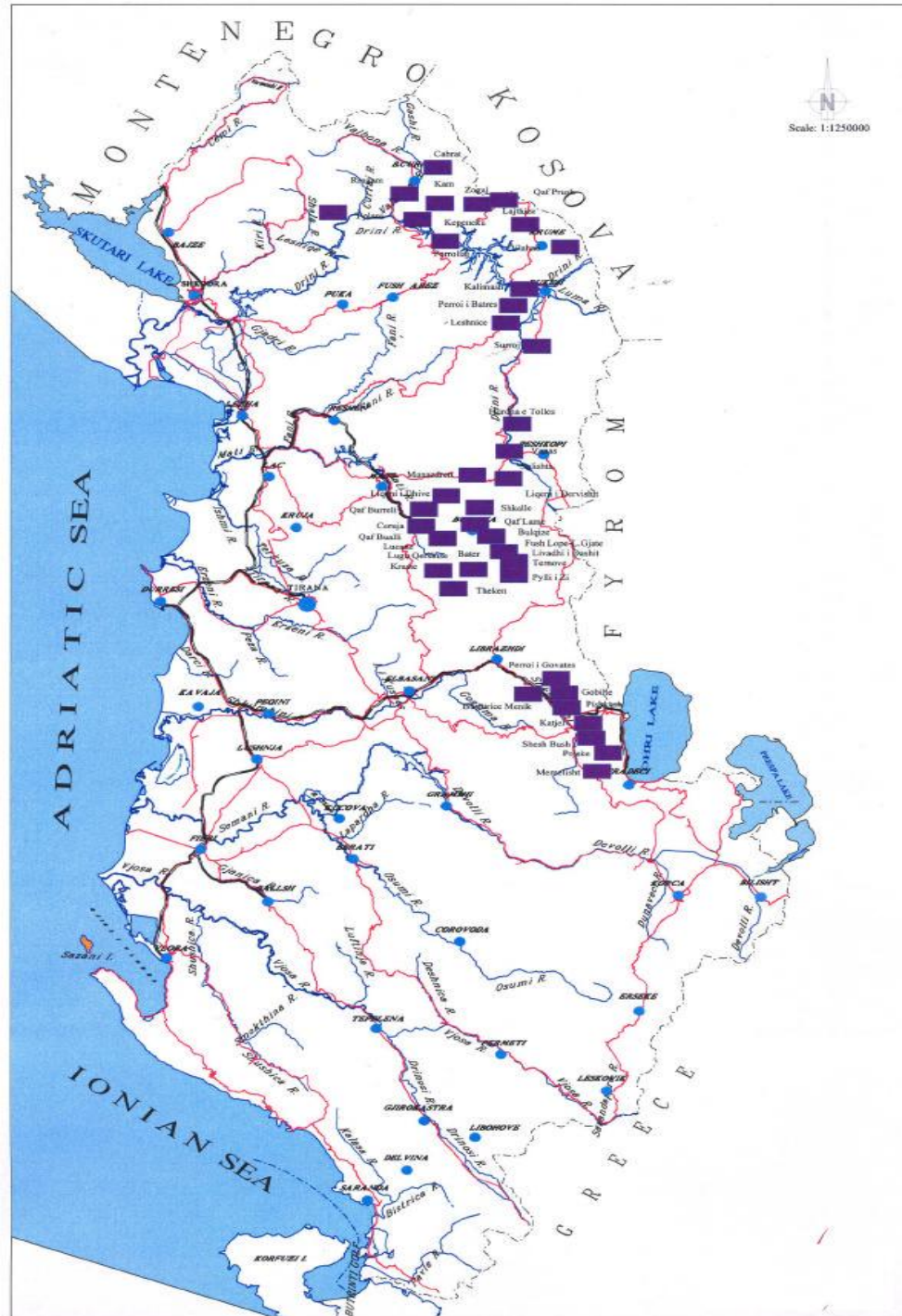
Mining permits according to the districts

Minerals production

Mineral	Product percentage in tons	Product percentage in valute
Chromium	2%	33%
Fe-Ni and Ni -Si	4%	9%
Copper	3%	16%
Coal-Bitum	1%	6%
Decorative stone	1%	9%
Clay	9%	17%
Lime stone	80%	10%

Mining production in 2009-2011

Mineral		Production	
		2009	2011
Chromium ore	ton	288759	187788
Chromium Concentrate	ton	13067	14260
Copper	ton	125000	286387
Copper-concentrate	ton	23256	30600
Fe-Ni and Ni-Si	ton	136256	416340
Coal	ton	2500	4500
Bitum + Tar sands	ton	32680	22200
Lime stone	m ³	2658326	4822450
Bedded Lime stone	m ³	29862	29000
Lime stone blocs	m ³	6583	70686
Sandstone	m ³	12368	13685
Clay	ton	825630	916860



Chromium ore

There are three main regions where chromium ore is located:

- **North-eastern Region (Tropoja and Kukës Ultrabasic Massifs);**
- **Central Region (Bulqiza and Lura Ultrabasic Massif);**
- **South-eastern Region (Shebenik-Pogradec Ultrabasic Massif).**

Chromium ore reserves

Actual chromium ore in the main regions are calculated to be as below:

- | | | |
|------------------------|----------|-------------------|
| ➤ B +EC1 | Category | 18.8 million tons |
| ➤ C2 | Category | 16.1 million tons |
| ➤ Totali: B + EC1 + C2 | | 34.9 million tons |



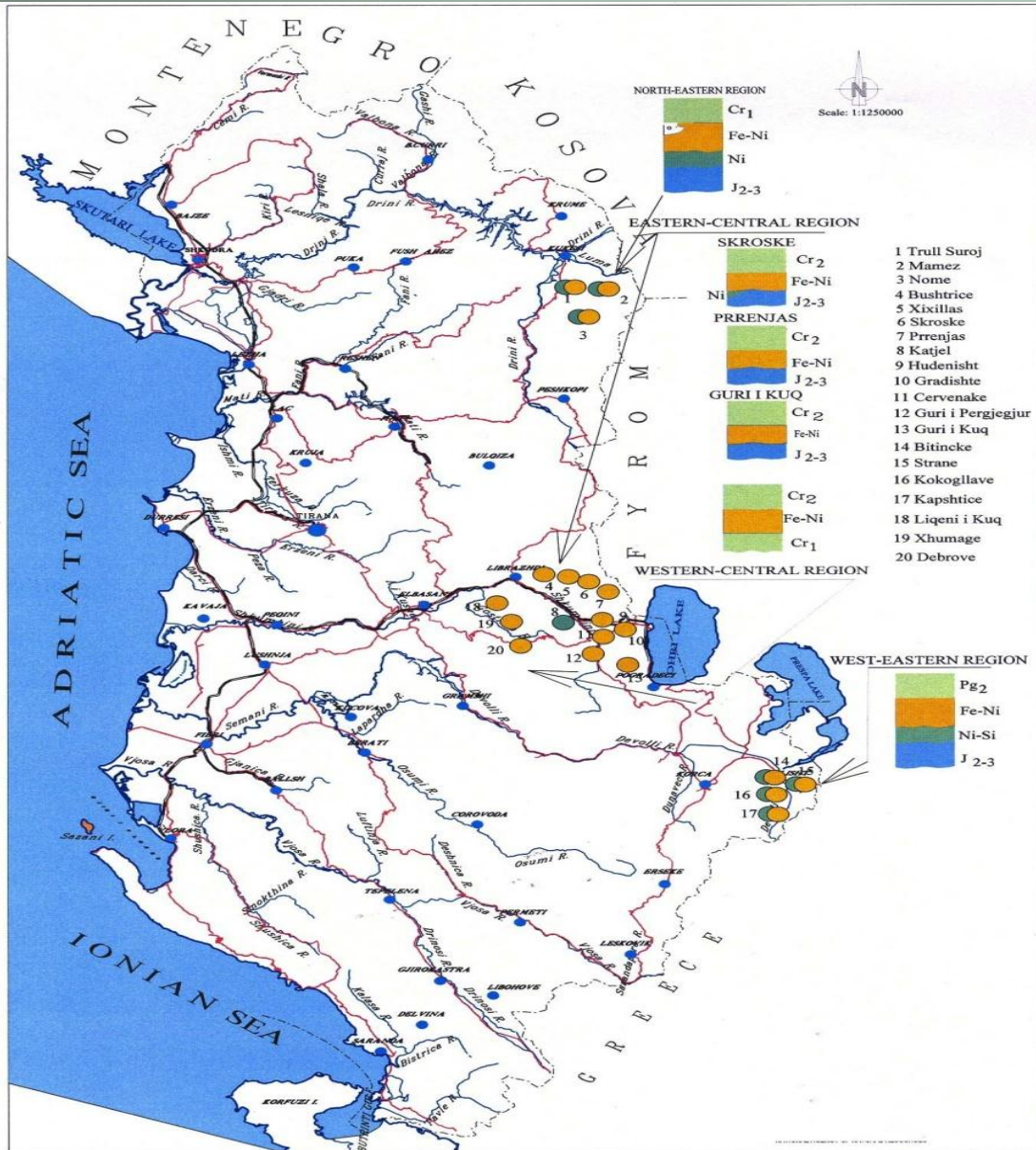
COPPER

Copper deposits are located in six districts: Korça, Mirdita, Puka, Shkodra, Kukës, and Has regions,

Copper reserves

- **Geological reserves of B, C1, C2 categories are 32 million tons of which 27 million ton are expected to be extracted from approximately 50 deposits.**
- **Geological reserves in new deposits are estimated to be 13.4 million tons with 1.853%. Munella deposit has approximately 8 million tons of geological reserves.**

Iron-nickel and Nickel-Silicate minerals



Iron-nickel and nickel-silicate are located near the East border of our country, from the North-East to the South-East area.

Perspective areas for iron-nickel and nickel-silicate exploration and prospecting can be:

- Kukës-Has-Cahan region;
- Trull-Surroi-Nome-Lurë area;
- Skroskë-Bushtrica-the depth of Prrenjas deposit area;
- Bilisht-Kapshtica area in Devolli region

Geological reserves

- **Fe-Ni reserves are 230 million tons;**
- **Ni-Si reserves are 81.4 million tons.**

Perspective areas of Fe-Ni and Ni-Si

Perspective areas for iron-nickel and nickel silicate exploration and prospecting can be:

- Kukës-Has-Cahan region;
- Trull-Surroi-Nome-Lurë area;
- Skroskë-Bushtrica-the depth of Përrenjas deposit area;
- Bilisht-Kapshtica area in Devolli region ;

COAL

The coal discovered and exploited in Albania are of the lignite type. The geologists through the mining works for exploration-prospecting, have fixed 14 (fourteen) coal-bearing deposits expanded all over the territory, from Tropoja to Saranda district.



Peats (turfs) and bitumen

Peats

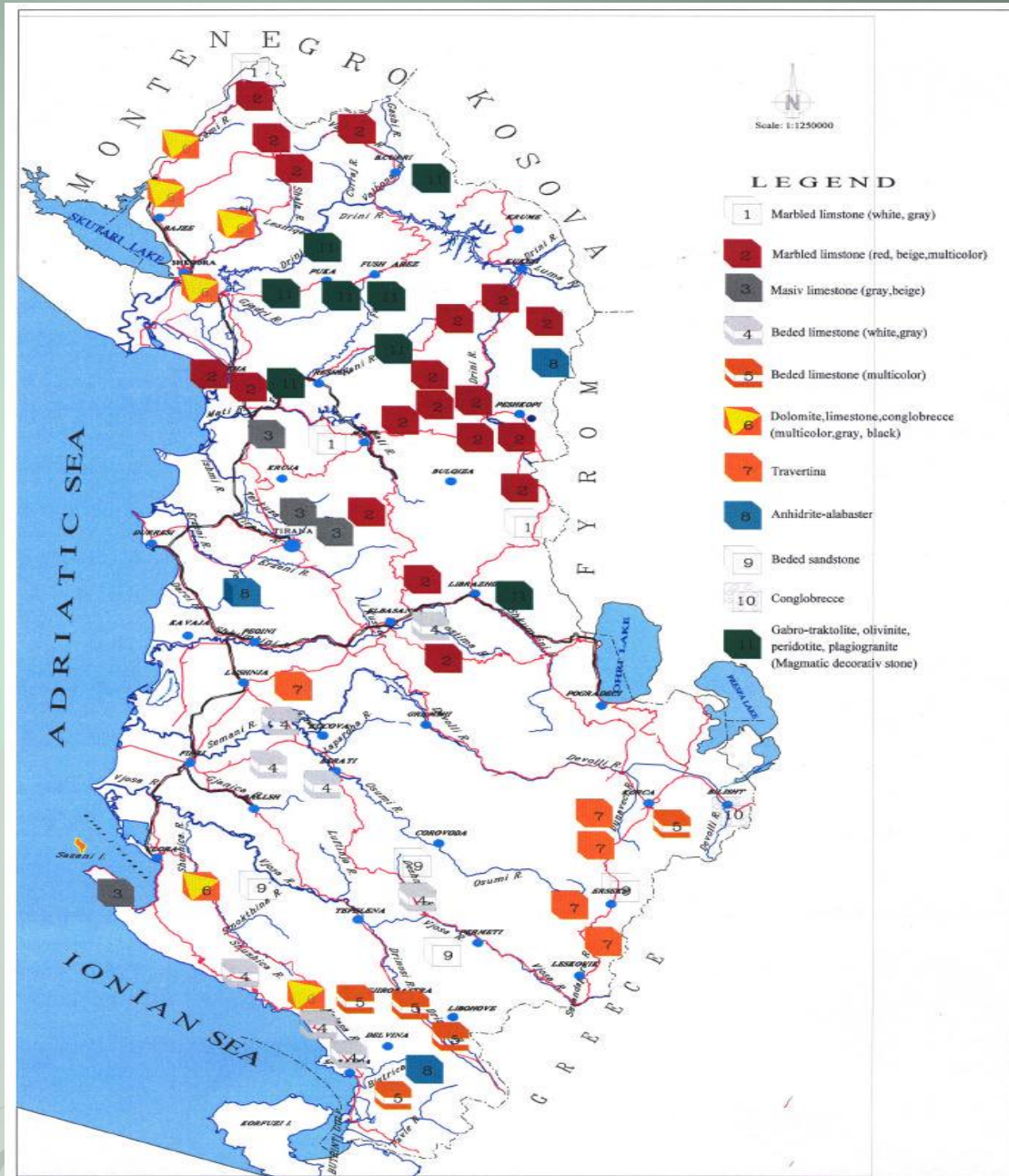
Some peats zones are found along the moors of Adriatic seaside, beginning from Shkodra to Vlora and in Korça fields and Vurgu as well.

Bitumen

In this group are included concentrations known as “Selenica Asphalt”.

Non-Metalliferous Minerals

There are 32 different kinds of rocks and non-metalliferous industrial minerals, expanded all over the country, in 438 deposits and mining objects.



Limestone and dolomites

Limestones

There are about 58 deposits of limestones, with approximately 490 million m³ geological reserves, with an open perspective to enlarge



Dolomites

Dolomites are widely spread in Albania.

There is an open perspective for 8 deposits with approximately 160 million m³ geological reserves.



2012 Licences

➤ **Antea Cement –SH.A**

Permit No. 987 - 4.313332 ALL investment

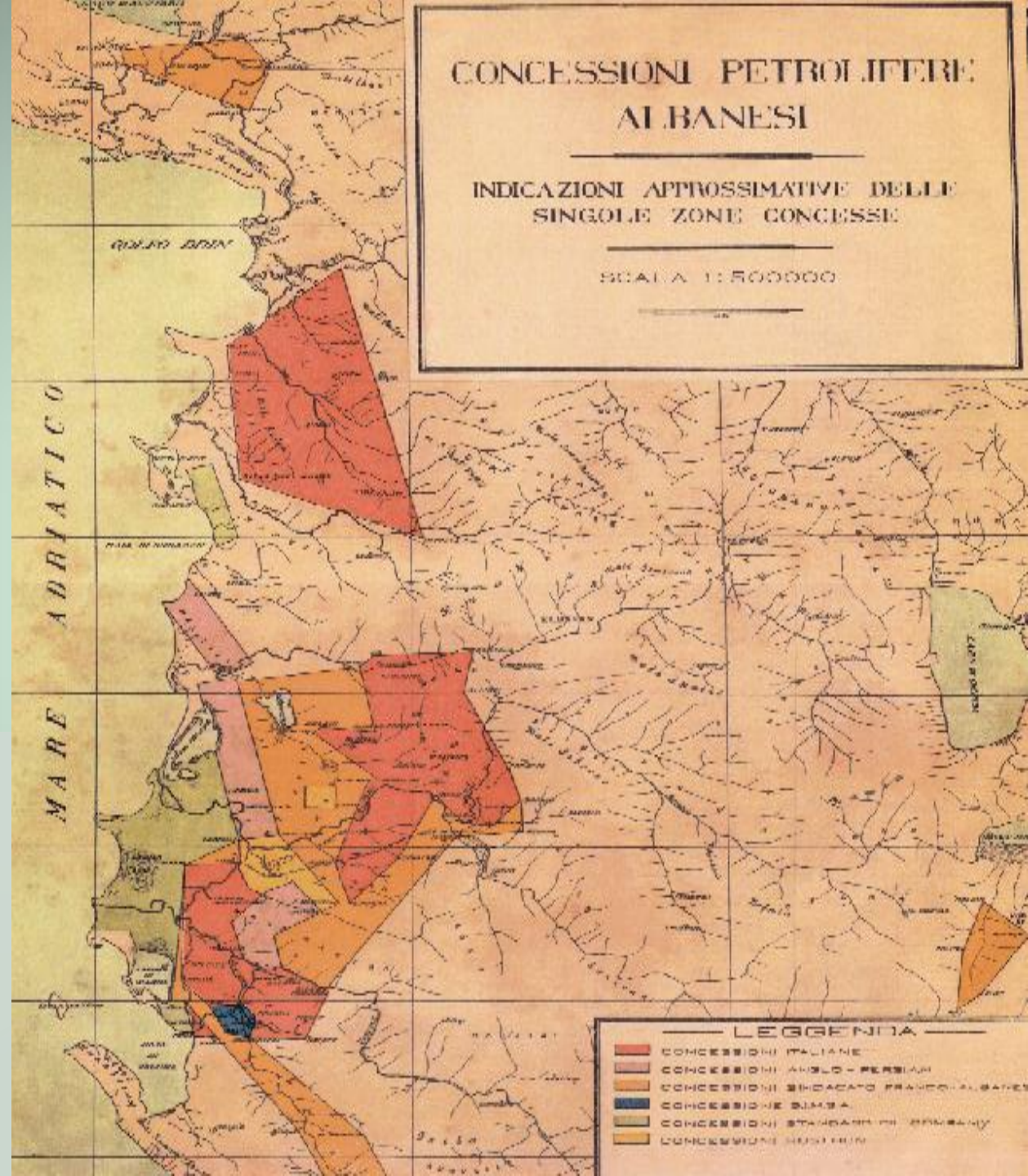
Permit NO. 988 - 8626668 ALL investment

Permit No1175- 0 ALL

Petroleum potential

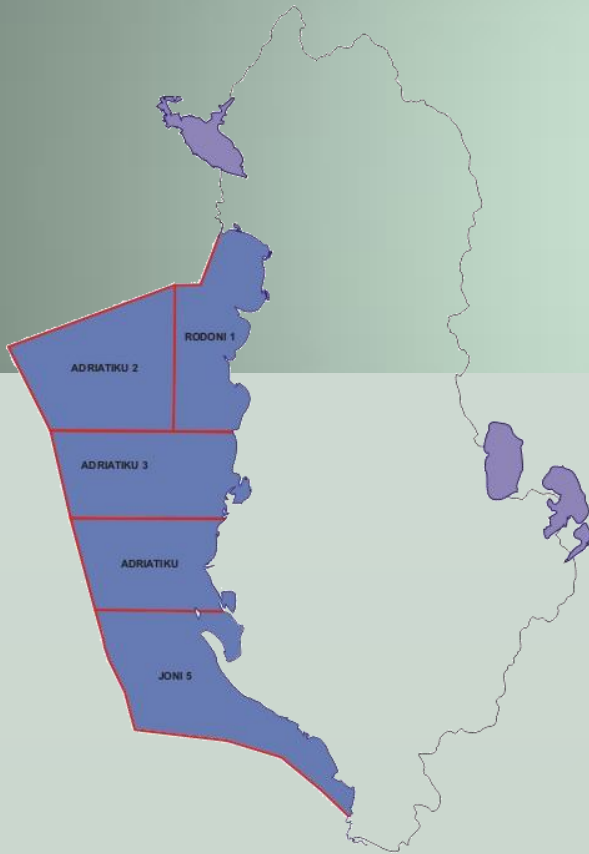
- Albania is a petroleum bearing country
- The estimated oil reserves are approximately 500 million barrels.
- Patos–Marinza region has estimated rezerves of 200 million barrels.
- In Albania recently are operating international petroleum companies

The first Petroleum
Concessions granted by
Albanian Government in
1925

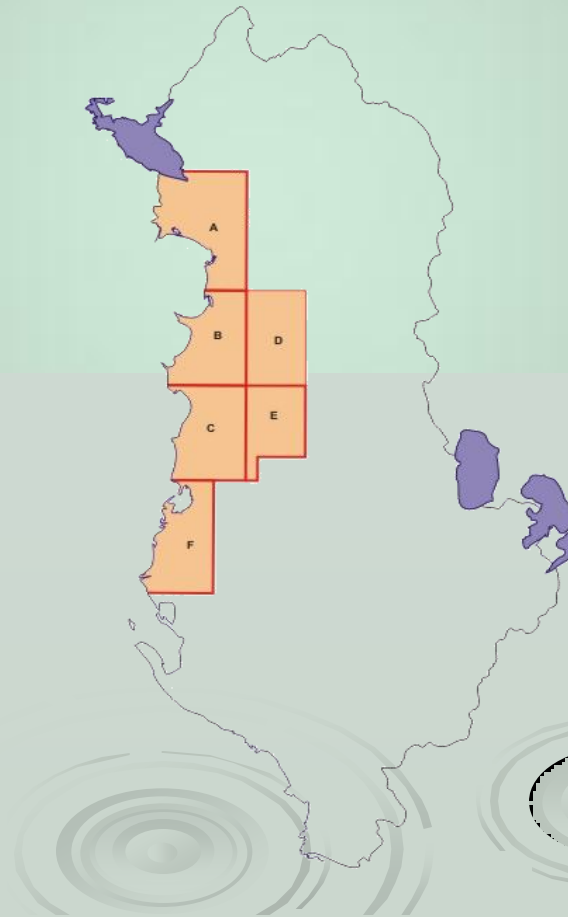


Licensing Rounds Organized after 1990

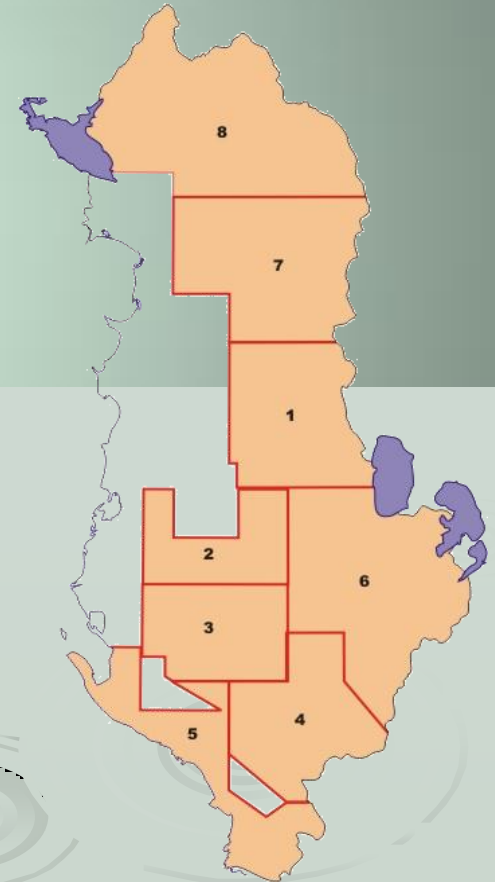
Offshore Licensing Round



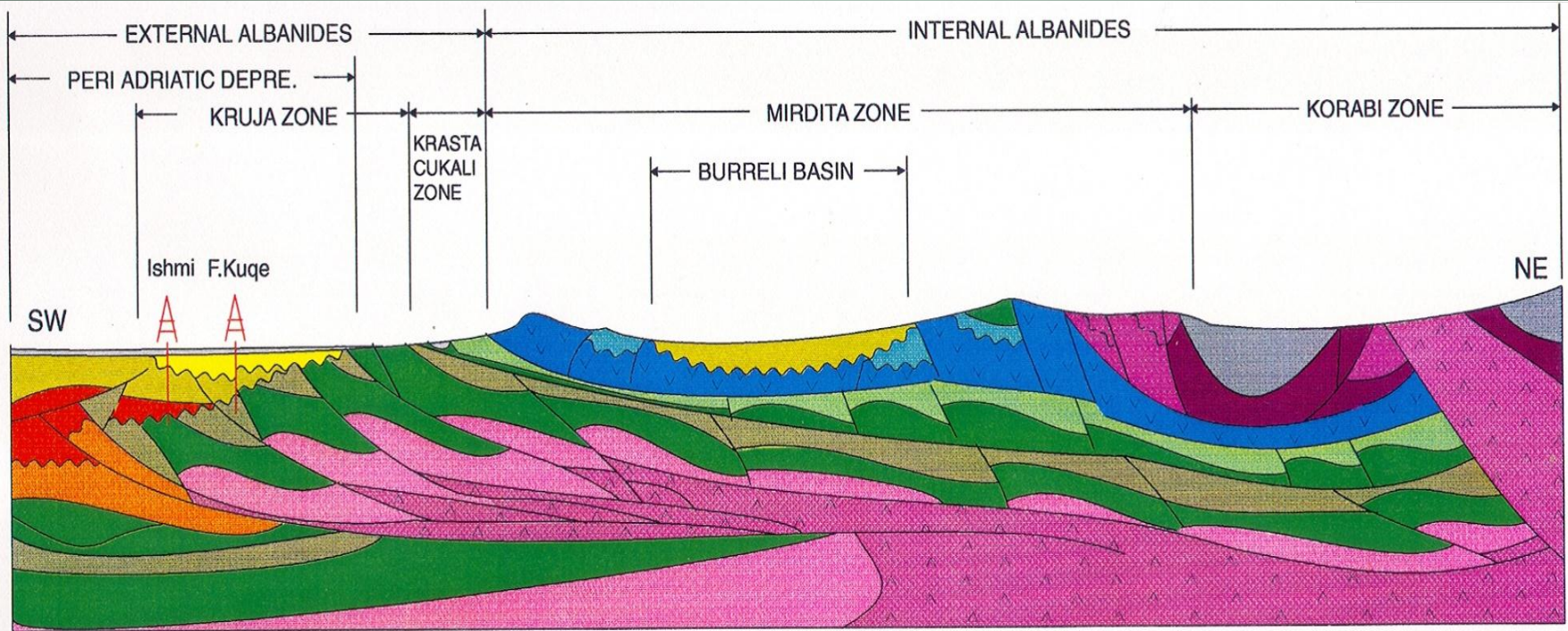
First Onshore Licensing Round



Second Onshore Licensing Round



Cross section I-I



Legend

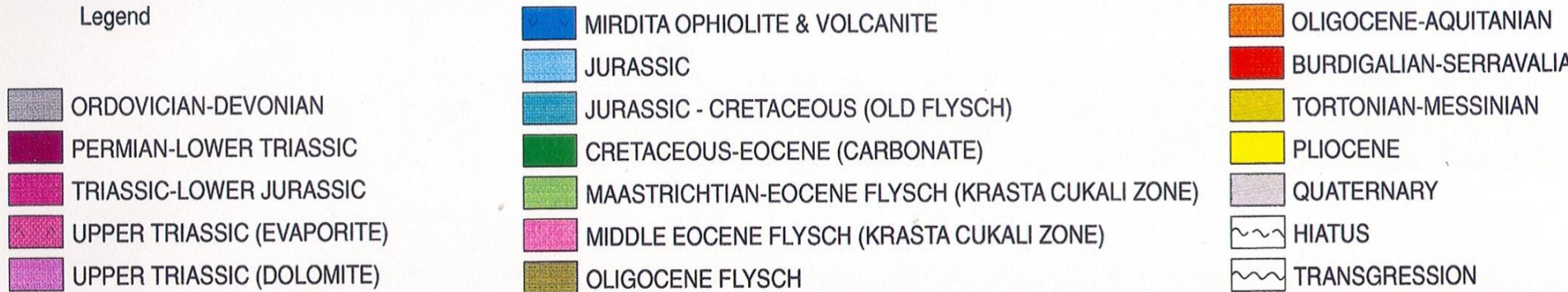
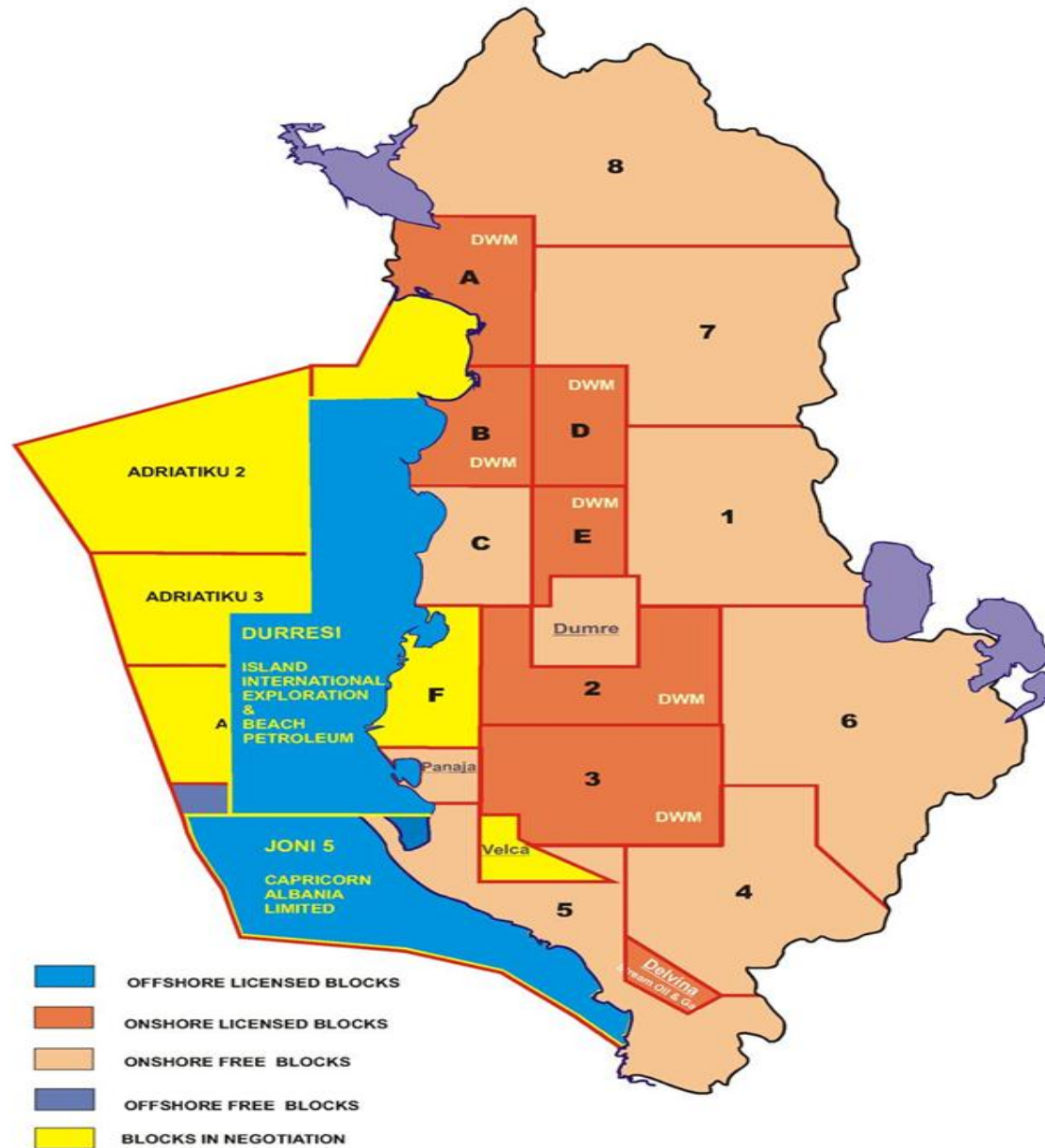


Fig. 6 Cross section I-I

ALBANIA

Licensed Exploration Areas



Exploration Agreements for oil and gas



Company	Production Sharing Contracts	Blocks operated	Investment period	Investment(MUS\$)		
				Program	Fact	
Petromanas Albania GmbH	Petroleum exploration and Production	A-B	2007-2011	7,320	5,305	
Petromanas Albania GmbH		D-E	2007-2011	7,320	10,621	
Petromanas Albania GmbH		2-3	2009-2011	8,500	9,952	
Bankers Petroleum Albania		F	2010-2011	5.000	774	
Capricorn Albania Ltd.		Joni 5, (offshore)	2007-2011	2,050	9.521	
San Leon Energy Plc.		Durrësi (offshore)	2004-2011	2,000	18,087	
Total sum				33.690	54.26	

Oil and gas Production Agreements

Company	Agreement	Region	Investment period	Investments (MUS\$)	
				Program	Fact
Bankers Petroleum Ltd.	Development of oilfields and production of petroleum in existing oilfields	Patos-Marinza	2004-2011	495,800	454 739
Sherwood International Petroleum Ltd.		Kuçove	2007-2011	4,900	1,700
		Ballsh Hekal	2007-2011	11 431	3,980
		Cakran-Mollaj	2007-2011	18,230	14,146
Stream Oil & Gas Ltd		Gorisht-Kocul	2007-2011	9,788	4,535
		Delvine	2007-2011	6,220	4,938
Transoilgroup AG		Visoke	2009-2011	3,100	920
Total sum					549,519

Oil and gas potential

There are still free offshore exploration blocks. AKBN is in negotiation procedures for some of them.

Northern Adriatic region, 900 km² are evidentuar oil gjurme.

AKBN can provide to interested companies all technical data.

Thank you for your attention

